

S E A L I N E

# Journal

**FEBRUARY  
2026**

**Vol.22**



**NAFL ELECTION  
CONTINUED  
LEADERSHIP**

**TOWARD 55 MILLION TEUS:  
TRANSFORMING  
GLOBAL SUPPLY-CHAINS**

**RELOCATION SUCCESS:  
15 DAYS, 3,000+ CBM,  
ZERO COMPROMISE:**

# IN THIS ISSUE



## 03

### NAFL Election

Continued Leadership:  
Celebrating a Key Victory

## 04

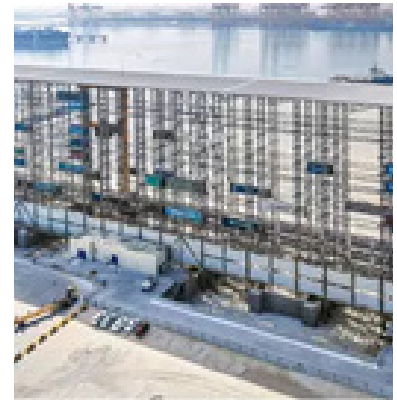
### BoxBay automated storage system

Smart Transformation of  
Jebel Ali Port

## 05

### Jebel Ali Port Optimization

Building a Fully Connected  
Smart Terminal



## 05

### Key Pillars of T4's Transformational Role

The Automated Vision  
Behind Terminal 4



## 06

### LASHING SPOTLIGHT

Safe Transport of an  
Aircraft Rescue Fire  
Fighting Vehicle

## 07

### A Landmark Facility Relocation Success

15 Days, 3,000+ CBM,  
Zero Compromise:



## NAFL ELECTION

# CONTINUED LEADERSHIP

## Sealine Marks a Significant Industry Milestone

Sealine Shipping and Removals begins the new year with pride, announcing that its Director, Tegin Thomas, has been re-elected as a Board Member of the National Association of Freight and Logistics (NAFL) in December 2025. While securing a board position is an achievement, re-election reflects strong industry confidence in his expertise, integrity, and leadership. This recognition goes beyond personal success, ensuring Sealine's values and insights are represented at the highest level of the logistics sector. It strengthens the company's role in industry developments and innovation. Sealine congratulates Mr. Thomas and looks forward to his continued contributions to the company and the industry.



**NATIONAL ASSOCIATION  
OF FREIGHT AND  
LOGISTICS (NAFL), UAE**

# Smart Transformation of Jebel Ali Port

## **JEBEL ALI PORT ENTERS THE SMART PORT ERA: ENGINEERING THE FUTURE OF GLOBAL LOGISTICS**

Jebel Ali Port has officially entered its "Smart Port" era. With the full-scale implementation of the BoxBay automated storage system and the expansion of Terminal 4, the port is no longer just a transit point—it is a high-tech staging ground. For companies managing "Premier" tier clients, these developments offer a unique playground for innovation. The port's ability to handle a record-breaking volume of breakbulk cargo—specifically oversized industrial components—has turned JEA into the primary artery for the region's most ambitious facility transfers.

In the competitive landscape of global trade, innovation is the primary engine of JEA's operational efficiency. The port has successfully moved beyond traditional cargo handling with the full integration of "BoxBay," a revolutionary High-Bay Storage (HBS) system.

## **TOWARD 55 MILLION TEUS: THE SMART PORT VISION TRANSFORMING GLOBAL SUPPLY CHAINS**



By stacking containers eleven stories high within a fully automated steel rack, the port has achieved a 200% increase in storage density compared to traditional terminal yards. This technology allows for direct access to any container without the need to "reshuffle" the stack, drastically reducing energy consumption and vehicle idling times. Furthermore, the adoption of AI-driven logistics, autonomous terminal tractors, and digital twin modeling allows port authorities to simulate and optimize vessel berthing and cargo movement in real-time. These advancements do more than just improve speed; they enhance safety standards for high-risk, heavy-lift operations, ensuring that even the most sensitive industrial accessories are handled without incident.

The successful execution of large-scale facility moves in Dubai is a testament to the city's world-class infrastructure. By leveraging the advanced capabilities of Jebel Ali Port and combining them with meticulous technical expertise, the logistics sector is proving that no asset is too large, and no component is too sensitive, to be moved with excellence.

As we look toward the 2030 target of 55 million TEUs, the message is clear: the future of industrial logistics isn't just about moving goods—it's about engineering the seamless transition of industry itself.

## Jebel Ali Port Optimization: Building a Fully Connected Smart Terminal

Modernizing port technology worldwide has traditionally progressed at a cautious pace, largely due to the immense cost, complexity, and operational risks involved. Transforming a conventional port into a fully networked, automated ecosystem capable of real-time cargo tracking—while ensuring reliability, cybersecurity, and seamless operations—is a formidable undertaking.

### TERMINAL 4 (T4) IS SET TO SPEARHEAD.

At the heart of this transformation lies the Internet of Things (IoT), which integrates physical assets with sensors, connectivity, and intelligent systems. In a fully connected port environment, containers, cargo, and equipment communicate across a unified digital network, enabling operators to monitor, analyze, and optimize activities in real time. This convergence of physical infrastructure and digital intelligence dramatically enhances efficiency, safety, and decision-making.



Terminal 4 (T4) is poised to lead this shift. Designed for the digital age, it incorporates semi-automated, remotely operated quay cranes alongside real-time monitoring of container locations, equipment performance, and key operational metrics—setting a new benchmark for smart port operations.



*Terminal 4 is a key component of DP World's broader, forward-looking strategy to transition from reactive port management to a predictive, fully automated logistics model.*

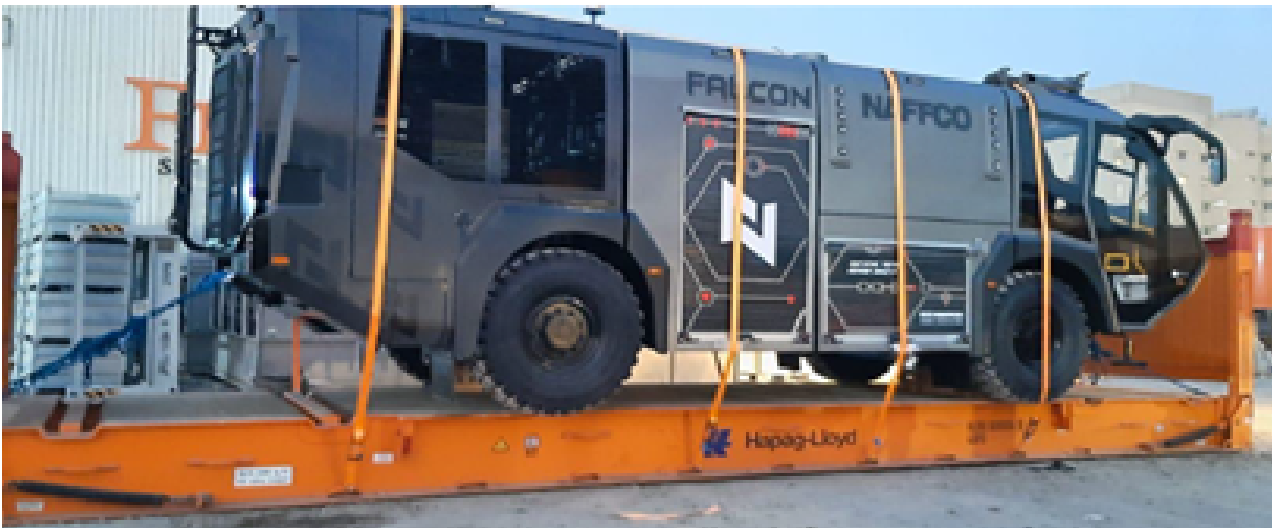
### Key Pillars of T4's Transformational Role:

Semi-automated quay and ARMG cranes are remotely controlled from off-site rooms, while smart connected systems provide real-time tracking of containers and equipment. A solar-powered high-bay system enables faster handling and retrieval. Phase 1 adds 3.1 million TEU capacity, scalable to 7.8 million TEU for mega-ships, and includes advanced RoRo automotive facilities with an 800-meter quay.

# LASHING SPOTLIGHT

## Safe Transport of an Aircraft Rescue Fire Fighting Vehicle

A specialized Aircraft Rescue Fire Fighting (ARFF) vehicle was successfully prepared for transport using a 40-foot flat rack (40FR) container, ensuring maximum safety and stability throughout the journey. Given its substantial dimensions of 10.50 x 3.40 x 4 meters and a weight of 22,500 kilograms, meticulous planning was essential. High-strength belts and heavy-duty chains were employed to firmly lash the vehicle, preventing any movement during transit across varying sea and weather conditions.



To further enhance stability, robust wooden chocks were strategically positioned around the wheels, effectively immobilizing the vehicle on the flat rack platform. This comprehensive securing method safeguards both the cargo and the vessel while meeting international shipping safety standards. The operation demonstrates precision handling of oversized emergency equipment, ensuring the ARFF vehicle arrives ready for deployment without compromise to structural integrity or operational readiness.



# A Landmark Facility Relocation Success

## From Desert to Tundra: Moving Mountains (Literally) for a Top-Tier Client

**15 DAYS, 3,000+ CBM, ZERO COMPROMISE:**

We recently achieved a monumental logistical victory, successfully executing a massive relocation project for one of Dubai's premier clients. The mission? A complex, high-stakes transfer of a large-scale facility. The scale of this operation was staggering. In a sprint of just 15 days, our team packed and processed a total volume of 3,000+ CBM. To meet this ambitious deadline, we deployed our highly skilled in-house planning and preparation specialists, while our packing teams operated day and night, running full 24/7 shifts with unwavering dedication.

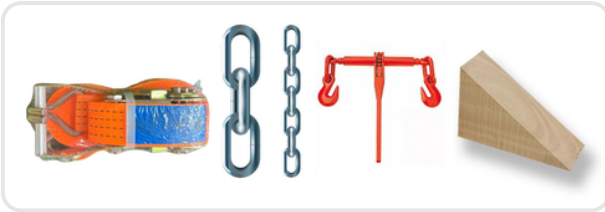


The inventory was as diverse as it was challenging. We managed everything from massive building components, industrial bin tippers, and oversized assemblies to highly sensitive accessories. This wasn't just moving; it was engineering protection. We applied tailored strategies including industrial-grade shrink wrapping, custom palletization, preservation packing, and heavy-duty lashing to secure high-risk machinery. Despite the inherent technical difficulties, our team delivered a seamless transition. We upheld the highest safety standards, exceeded client expectations, and proved once again that when it comes to industrial packing, no challenge is too heavy, and no distance is too far.

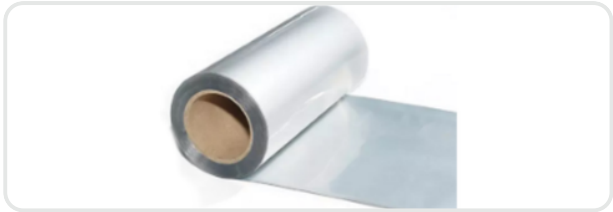
# LOOK BOOK OF THIS MONTH!



# ONE-STOP SHOP FOR SHIPPING SOLUTION



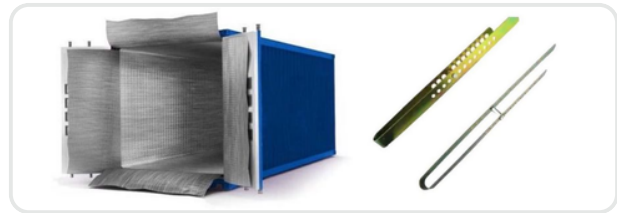
CONTAINER LASHING



VCI ANTI-CORROSION



PACKAGE PRODUCTS



CONTAINER PACKAGING &amp; ACCESSORIES

Sealine Shipping offers premium products for all your shipping needs. Our range includes top-quality container lashing solutions to ensure secure transport, VCI anti-corrosion products to protect your cargo, and a variety of packaging products designed for durability and efficiency. Additionally, we provide an extensive selection of container packaging accessories, ensuring every shipment is safe and well-prepared. Trust Sealine Shipping for reliable, high-performance products that meet the highest industry standards.



SUBSCRIBE TO  
SEALINE JOURNAL



S E A L I N E  
**Journal**

FEBRUARY 2026  
VOL: 22

